



Item No: 8C  
Date of Meeting: Oct. 5, 2021

# Service Crane Platform

Presenters:  
Rick Atkinson, Assistant Director, Equipment Maintenance  
Joe Caldwell, Maintenance Project Manager

# Project Authorization Service Crane Platform

*As referenced in NWSA Resolution No. 2020-02, Exhibit A, Delegation of Authority Master Policy, Paragraph 8.c.iii., states project costs exceeding \$300,000 require approval from Managing Members.*

**Request project authorization in the amount \$380,000 for work associated with the Service Crane Platform, Master Identification No. 201133.01.**

# Background

## Service Crane Platform

- The new STS cranes have large hydraulic cylinders and motors along with heavy wire rope sheaves that need to be changed from time to time when they fail or need to be serviced.
- Due to the size and weight of these components they cannot be brought up the elevator or by using the machine house service crane.
- The service crane is used to hoist these items into place at over 200ft in the air.
- Current design does not include a safe way to reach the cranes for servicing and repair.

# Background

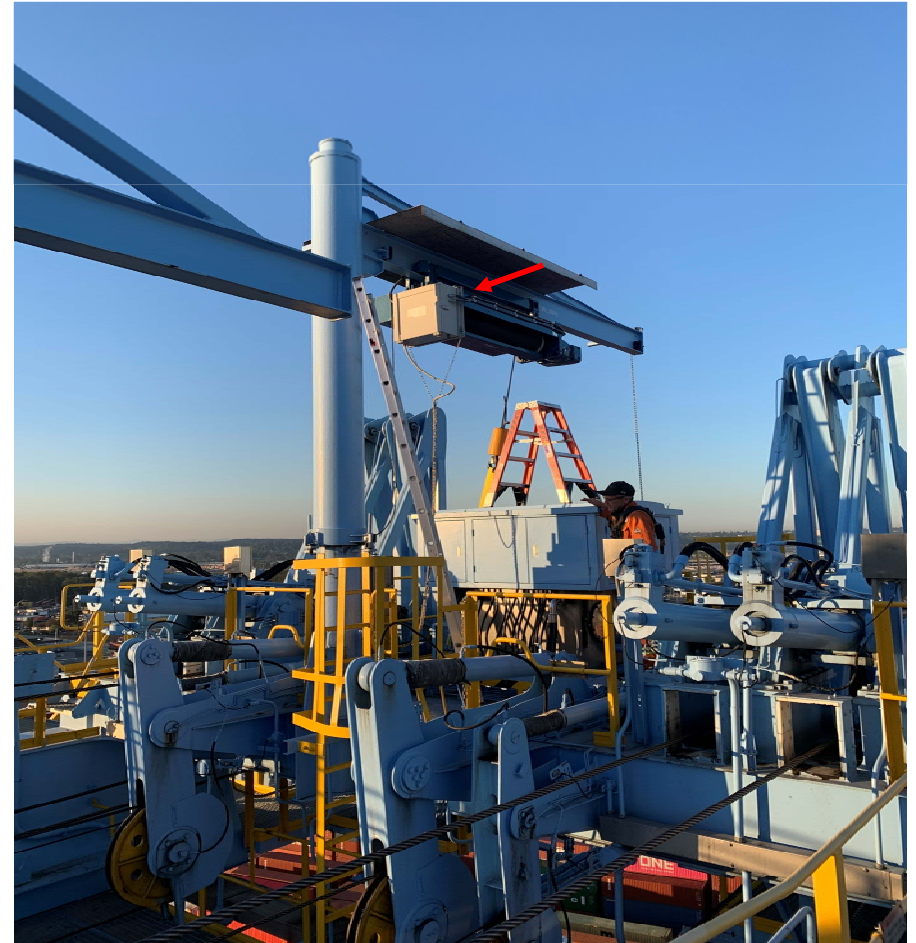
## Service Crane Platform

- Currently we are using ladders and connecting with fall protection harnesses as a temporary solution to keep the cranes serviceable.
- While maintenance is mitigating risks as much as possible this is not a sustainable safe procedure to maintain the cranes.
- We are proposing service crane maintenance platforms be installed on all eight (8) STS cranes on Piers 3 & 4.
- This will allow the maintenance team to properly service and repair the service cranes safely and in a timely manner so the STS cranes will be operational when needed to support our customers' needs.

# Backreach Service Crane Location



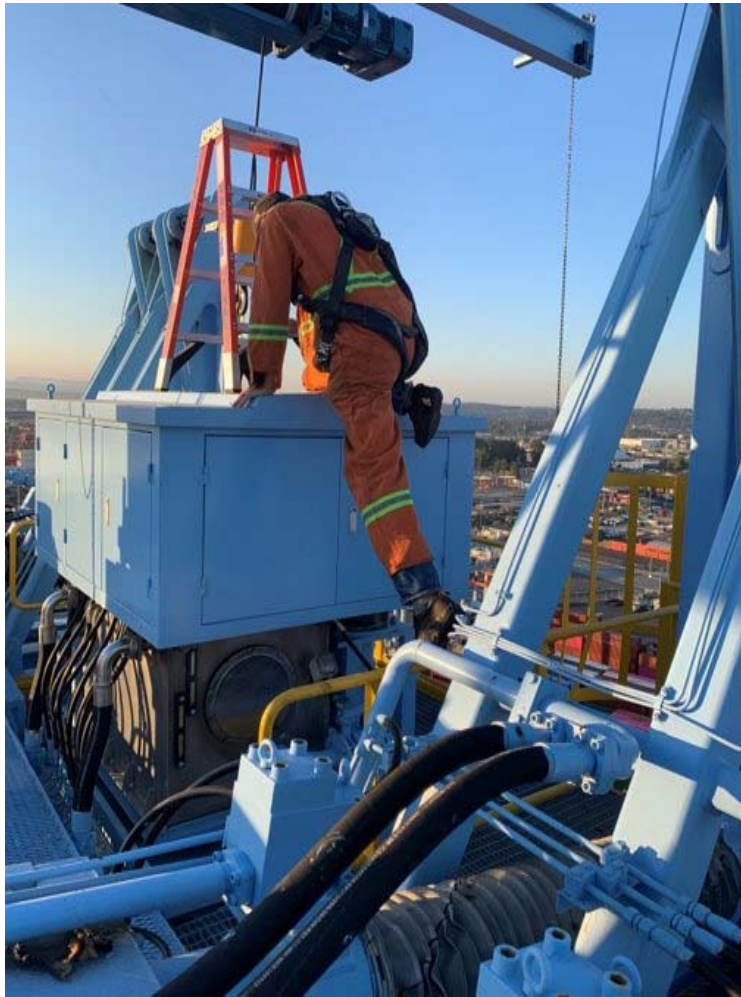
# Backreach Service Crane Location



# Backreach Service Crane Access



# Backreach Service Crane Access

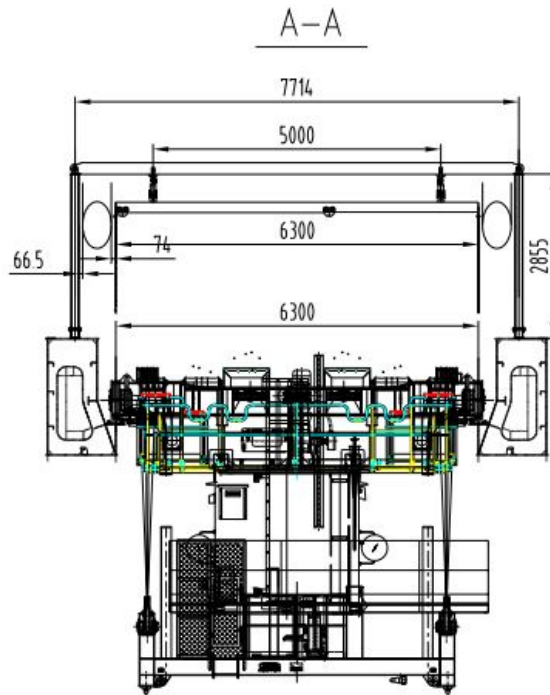


# Backreach Service Crane Access



# Project Description

## Service Crane Platform



- Design service platforms: \$13K
- Procure material: \$20K
- Fabricate and Install: \$323K, this is fully the burdened in-house labor cost at a charge out rate of \$174.49 per hr.
- Cost minus labor: \$33K
- Net Project Cost: \$380k

# Project Schedule

## Service Crane Platform

<b>Design</b>	<b>10/15/21 - 11/15/22</b>
<b>Order Material</b>	<b>11/15/21 - 12/1/21</b>
<b>Fabricate/Install</b>	<b>12/1/21 - 7/15/22</b>

- Fabricate/Install timeline may be need to be adjusted due to shipping schedule and this will be done in-between other required maintenance.

# Source of Funds

## Service Crane Platform

- The estimated cost of the Design/Procurement/Fabrication for this project is \$380,000.
- The current Capital Investment Plan (CIP) Budget allocates \$379,000 for this project.
- This work and associated budget is consistent with the NWSA valuation and safety requirements.

# Financial Summary

## Service Crane Platform

	This Request	Total Project Cost	Cost to Date	Remaining Cost
Procurement	\$ 20,000	\$ 20,000	\$ -	\$ 20,000
Design	\$ 13,000	\$ 13,000	\$ -	\$ 13,000
Construction	\$ 323,000	\$ 323,000	\$ -	\$ 323,000
Contingency	\$ 24,000	\$ 24,000	\$ -	\$ 24,000
<b>Total</b>	<b>\$ 380,000</b>	<b>\$ 380,000</b>	<b>\$ -</b>	<b>\$ 380,000</b>

# Conclusion

## Service Crane Platform

**Request project authorization in the amount \$380,000 for work associated with the Service Crane Platform, Master Identification No. 201133.01.**

